

SWO International Science Olympiad 2021-22

Class III

Questions: 20

Time Duration: 30 Minutes

There are 4 Sections- 5 Questions in Section-1, 5 Questions in Section-2, 5 Questions in Section-3, 5 Questions in Section-4.

Section-1

1. Communication through facial expressions, body gestures, signs, drawing, graphic design, color, pictures, and paintings are called _____.

- (a) Verbal Communications
- (b) Non-Verbal Communications

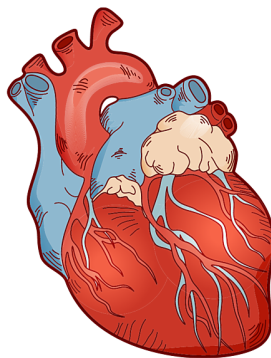
Ans. (b)

2. There are _____ main means of communications.

- (a) Four
- (b) Three
- (c) Five
- (d) Two

Ans. (b)

3. Look at the picture and identify the organ.



- (a) Mouth

- (b) Lungs
- (c) Heart
- (d) Kidney

Ans. (c)

4. Read the statement and check which is correct.

- (a) Wash your hand before eating.
- (b) Eating oily and junk food.
- (c) Eat lots of fruits and vegetables.
- (d) Both (a) and (c)

Ans. (d)

5. Those who do not eat meat or fish are called _____.

- (a) Vegetarian.
- (b) Non - Vegetarian.

Ans. (a)

Section-2

6. Read the statement and check which is incorrect.

- (a) We should exercise regularly.
- (b) We should not eat a healthy and balanced diet.
- (c) We should drink at least 6-8 glass of water daily.
- (d) Both (a) and (c)

Ans. (b)

7. Look at the picture and identify the festival name.



(a)



(b)



(c)



(d)

Ans. (a)Diwali, (b)Holi, (c)Christmas, (d)Makar Sankranti

8. Which day is also known as "Bal Diwas".

- (a) Raksha Bandhan.
- (b) Buddha Purnima.
- (c) Teacher's Day.
- (d) Children's Day.

Ans. (d)

9. Look at the picture and identify the force.



- (a) Muscular force .
- (b) Mechanical force.
- (c) Magnetic Force.
- (d) Frictional Force.

Ans. (a)

10. When we push any toy car, it cause which effect of force.

- (a) Force change the direction.
- (b) Force changes the speed .
- (c) Force stops motion.
- (d) Force causes motion.

Ans. (d)

Section-3

11. Look at the picture and choose the correct option.



- (a) Artificial light .
- (b) Natural light.

Ans. (b)

12. Material that allows light to pass through them in straight lines is called _____.

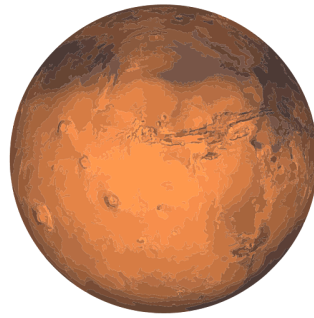
- (a) Non - transparent material.
- (b) Translucent material.
- (c) Transparent material.
- (d) Opaque material.

Ans. (c)

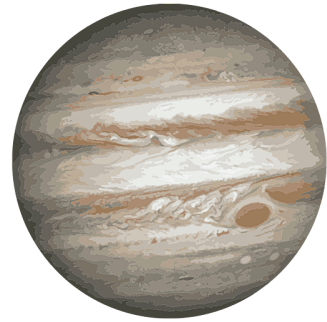
13. Look at the pictures and write the planet name.



(a)



(b)



(c)

Ans. (a)Earth, (b)Mars, (c)Jupiter.

14. Which planet is cold and fourth planet from the sun.

- (a) Mars.
- (b) Jupiter
- (c) Neptune.
- (d) Venus.

Ans. (a)

15. The process in which a gas changes into its liquid state is called

_____.

- (a) Evaporation.
- (b) Condensation.
- (c) Precipitation.
- (d) Accumulation.

Ans. (b)

Section-4

16. This process of changing liquid water into gas or vapor is called Evaporation.

- (a) True.
- (b) False.

Ans. (a)

17. Vitamin not helps to form and maintain healthy teeth, bones and skin.

- (a) True.
- (b) False.

Ans. (b)

18. It contains taste buds such as sweet, sour, salty and bitter.

- (a) Stomach.
- (b) Mouth.
- (c) Tongue.
- (d) Esophagus.

Ans. (c)

19. Look at picture and write their name.



(a)



(b)



(c)

Ans. (a) Laptop (b) Mobile (c) Telephone

20. Vijayadashami is also known as _____.

- (a) Diwali.
- (b) Dusserha.
- (c) Onam.
- (d) Buddha Purnima.

Ans. (b)

